



DEPENBROCK

## REFERENZ HARBOUR CONSTRUCTION AND MARINE ENGINEERING

### Cruise Center 3, Hamburg



In 2015 a third cruise terminal was built by HPA Hamburg Port Authority AöR on the former Ellerholzterminal/Steinwerder at the Kronprinzenkai (Crown Prince Quay).

The subject matter of this contract, which was awarded to F+Z Baugesellschaft (BMOS), was the delivery and installation of a fender system as well as the construction of mooring dolphins with a steel access footbridge.

For the construction of the fender system a variant solution planned by F+Z Design department was awarded.

The construction consists of a fender board made of 11 HZ880MC profiles and laterally arranged guiding tubes, which allow the floating fenders with a diameter of Ø 3,30m to follow within the tidal range.

Along the Kronprinzenkai a total of five fenders were arranged.

For having an additional dolphin as mooring possibility a reinforced concrete platform founded on four tubes Ø1620 was installed.

The platform was equipped with a quick release triple mooring unit (traction 3 x 500 kN). For access to this mooring unit a 22m long steel footbridge was built.



**Contract Value:**  
~ 1,5 € Mio

**Executed by:**  
Depenbrock Ingenieurwasserbau  
**former** F+Z Baugesellschaft (BMOS)

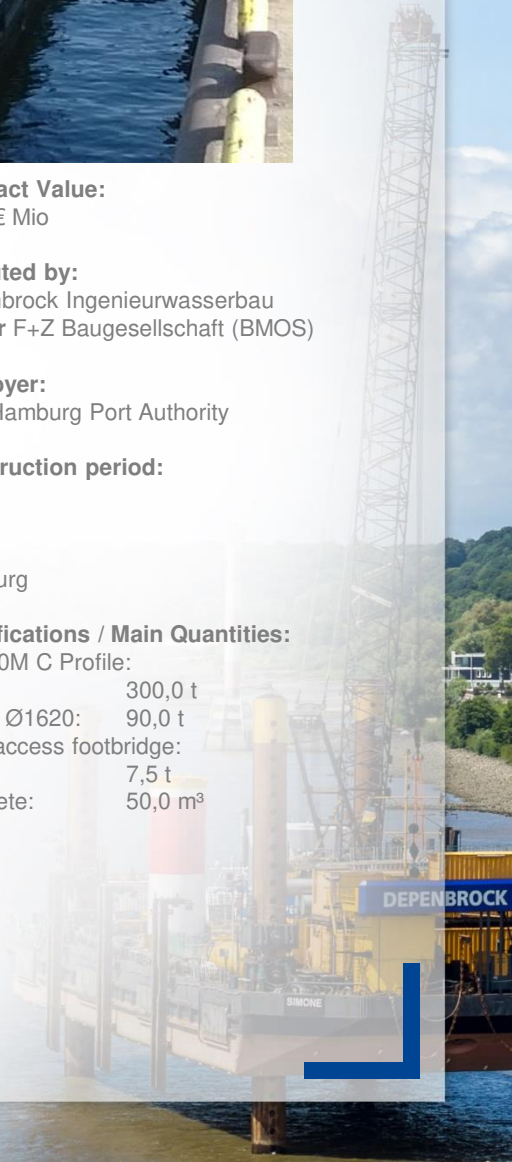
**Employer:**  
HPA Hamburg Port Authority

**Construction period:**  
2015

**Site:**  
Hamburg

**Specifications / Main Quantities:**  
HZ 880M C Profile:

	300,0 t
Tubes Ø1620:	90,0 t
Steel access footbridge:	7,5 t
Concrete:	50,0 m³

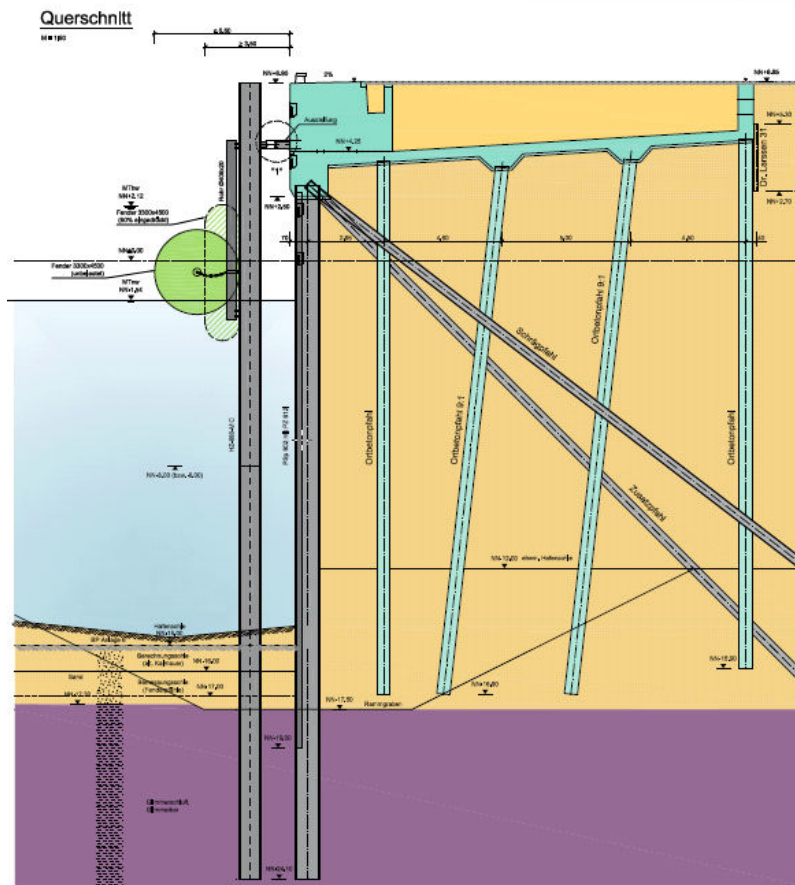




DEPENBROCK

## REFERENZ HARBOUR CONSTRUCTION AND MARINE ENGINEERING

### Cruise Center 3, Hamburg



DEPENBROCK

