



DEPENBROCK

## REFERENZ HARBOUR CONSTRUCTION AND MARINE ENGINEERING

### Dolphin berth „Brücke 3“, Cuxhaven



At the end of 2014, Depenbrock IWB former F+Z Baugesellschaft received an order for an ancillary offer for the construction of the dolphin berth "Bridge 3" in Cuxhaven.

The project included the construction of five bollard blocks equipped with fenders. They were anchored with combined inclined piles made of tubes  $\varnothing 610 \times 16$  mm and HTM 600/158 profiles.

Five steel catwalks with spans of approx. 25 m connect the bollard blocks and ensure access from land.

Furthermore, for the smooth transhipment of cars, a 24-tube pile

$\varnothing 914 \times 12.5$  mm of precast reinforced concrete access slab with in-situ concrete supplement. The construction could be optimized by an additional offer.

In addition to the new construction of the plant, the existing pontoon bridge had to be relocated, whereby the associated guide dolphins were moved and a new bridge support was created on land.

Mooring and protection dolphins with diameters of  $\varnothing 1420$  mm to  $\varnothing 1829$  mm were provided to ensure the ship mooring processes.

The dolphin berth is designed for ships with lengths of up to 165 m and is mainly used for vehicle handling in Cuxhaven.

**Contract Value:**  
~ 2,30 € Mio

**Contractor:**  
Depenbrock Ingenieurwasserbau  
**former:** F+Z Baugesellschaft

**Employer:**  
Niedersachsen Ports GmbH & Co. KG

**Construction Period:**  
Dez. 2014 - Juli 2015

**Site:**  
Cuxhaven

#### Technical Data / Main Masses:

Pipes	223 t
Inclined Piles	100 t
Concrete + precast concrete elements	840 m <sup>3</sup>

Demolition work	
Pulling dolphins	
Deepwater dredging	
Corrosion protection	2.000 m <sup>2</sup>

Electrical equipment	
Equipment (Bollards, Fenders)	

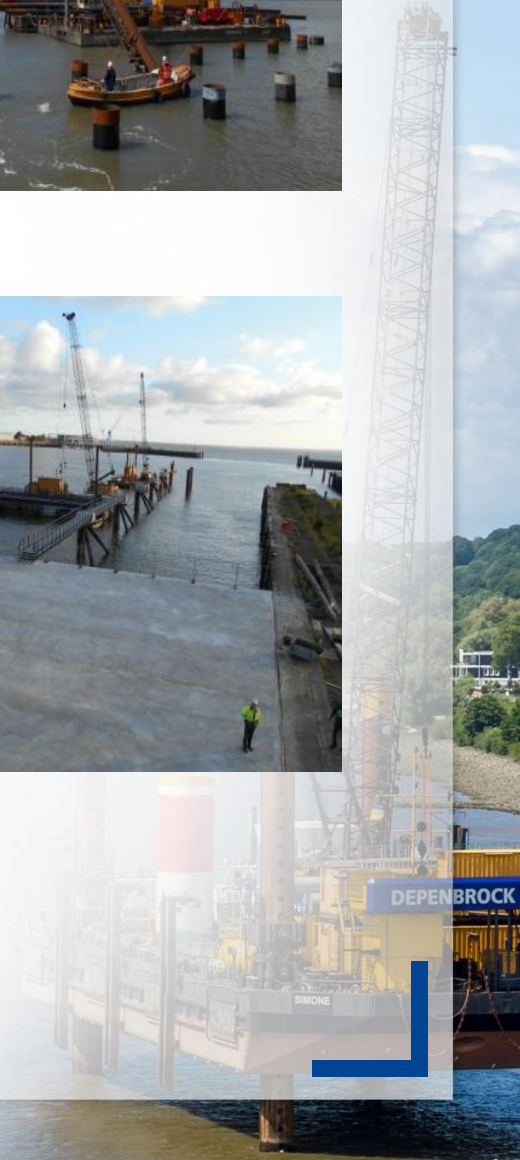
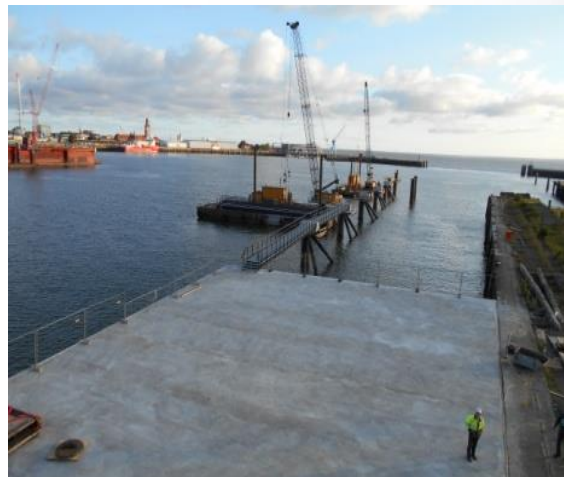
DEPENBROCK



DEPENBROCK

## REFERENZ HARBOUR CONSTRUCTION AND MARINE ENGINEERING

### Dolphin berth „Brücke 3“, Cuxhaven



DEPENBROCK

SIMONE